

PURPOSE

- D.A Porath facility constructed in 1953
- Sanitation Operations staff has grown from 20 to 50 employees
- 24/7 Facility that provides emergency response for Sanitation Districts and service areas
- Existing Building Area- 10,700 square feet

NEED

- Heating, Ventilation, Air condition improvements in Main Building
- Indoor Lighting improvements
- Employee parking
- Secondary ingress/egress access for sanitation equipment
- Employee offices located above the wet well and Tuff® sheds
- Building structural deficiencies
- Existing Building Area- 10,700 square feet
- Proposed Alternatives 1 to 4 - approximately 15,972 square feet
- Preferred Alternative – 8,000 square feet

TIMELINE

Phase 1 FY 2019/2020

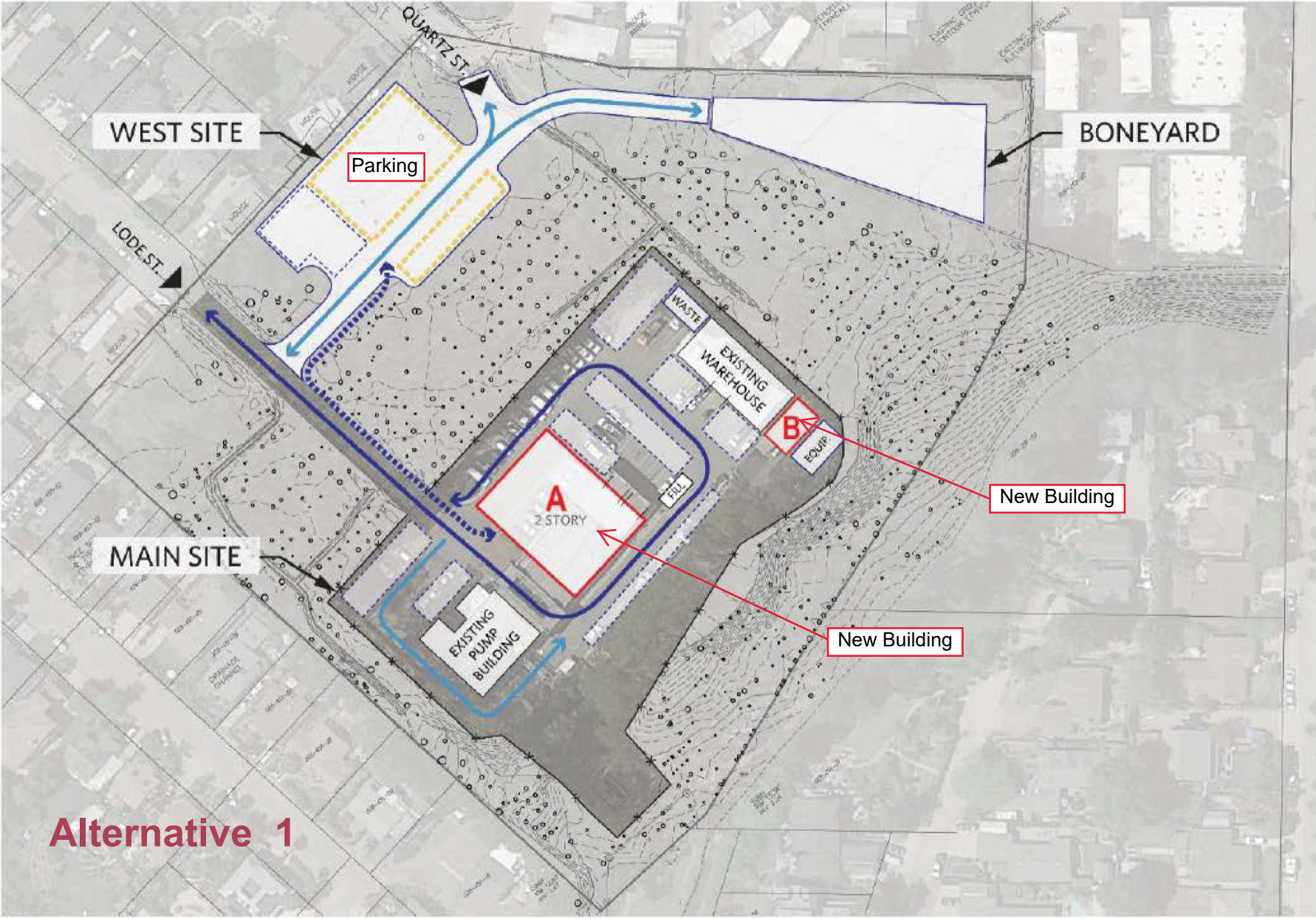
- Regrade and pave boneyard for storage of equipment
- Fence improvements on the East side
- Develop plan for lot of the West side for employee parking
- Study options for a two-story building next to the Warehouse
- Develop a plan for Monarch Butterfly enhancements

Phase 2 FY 2020/2021

- Existing Pump, Main Building, and Warehouse buildings to remain
- Construct new entrance from West side parking lot to boneyard
- Construct West side employee parking
- Move shop area to Warehouse
- Improve Existing Building (office space, HVAC, roof, concrete repairs, windows)
- Underground the existing overhead power line on Lode Street

Phase 3 FY 2021/2022

- Construct two-story building next to Warehouse
- Construct access to wet well at the Facility pump station



WEST SITE

Parking

BONEYARD

LODE ST.

QUARTZ ST.

MAIN SITE

A
2 STORY

WASTE

EXISTING
WAREHOUSE

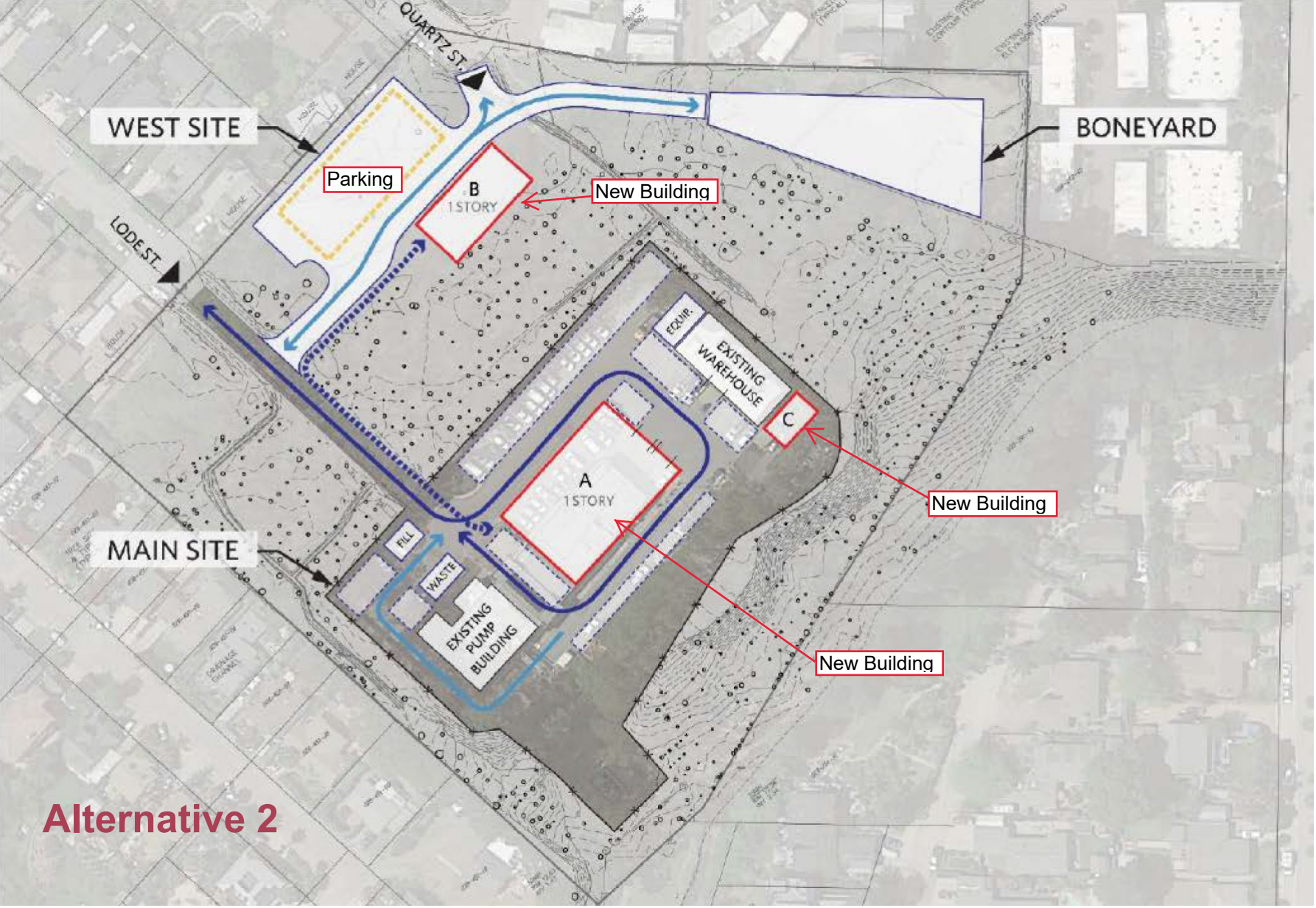
B

EQUIP.

New Building

New Building

Alternative 1



WEST SITE

BONEYARD

Parking

B
1STORY

New Building

LODE ST.

A
1STORY

EQUIP
EXISTING WAREHOUSE

C

New Building

MAIN SITE

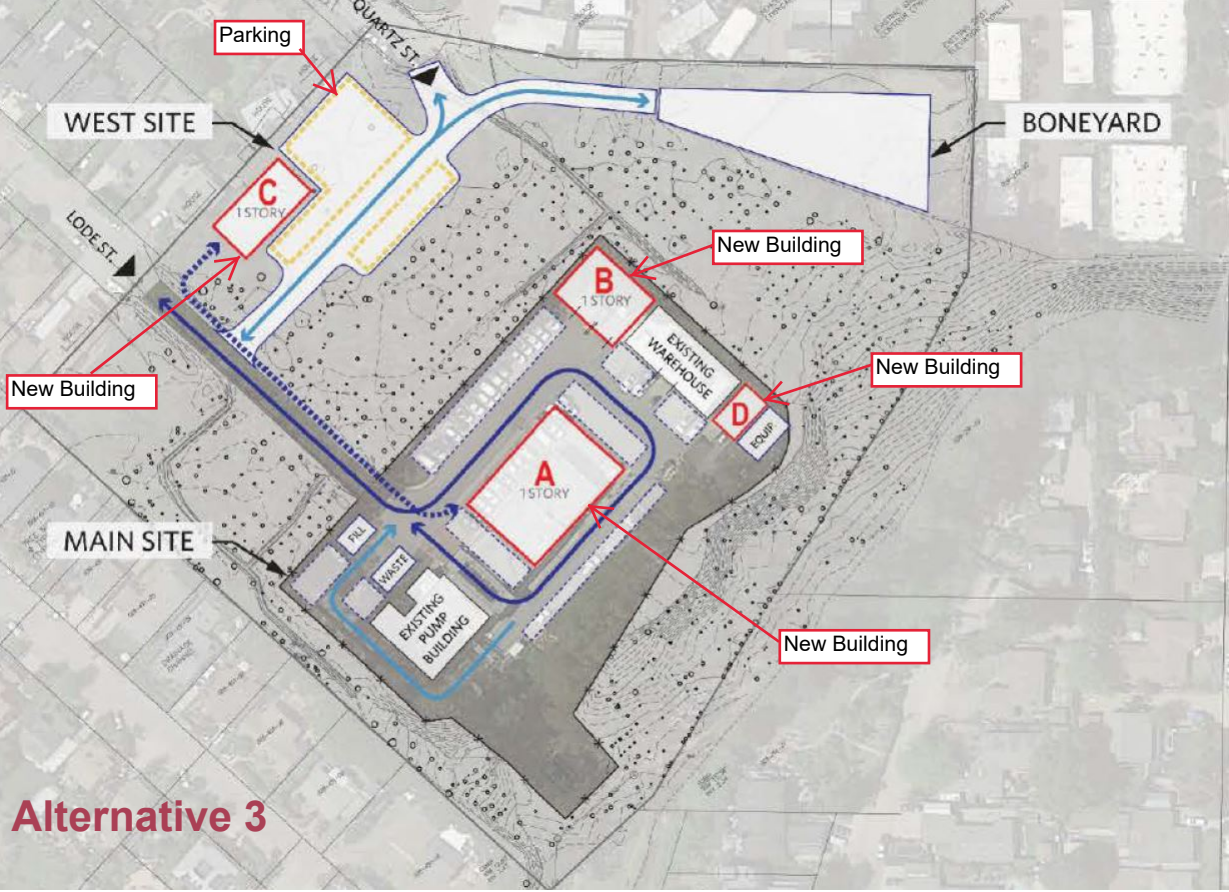
FILL

WASTE

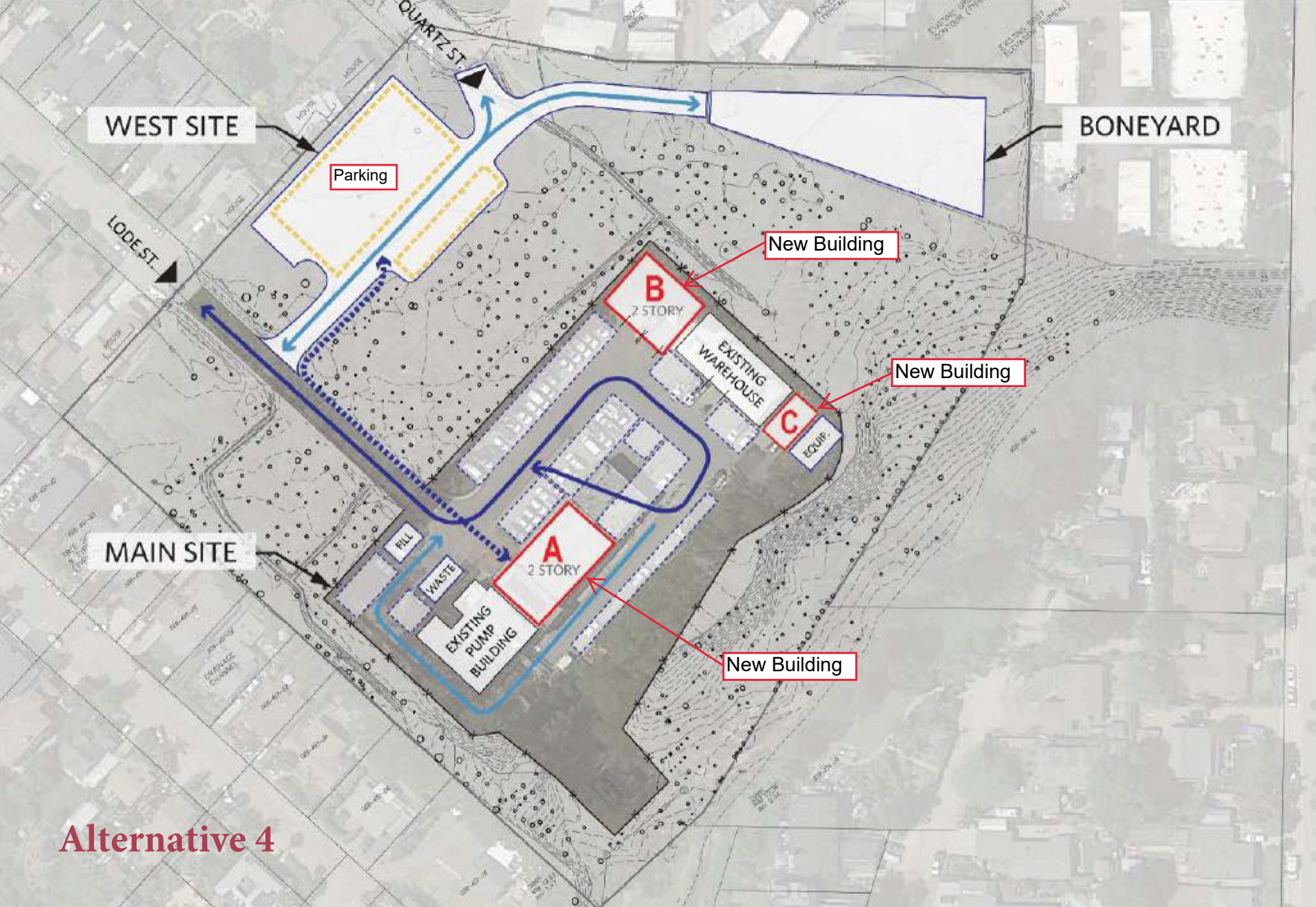
EXISTING PUMP BUILDING

New Building

Alternative 2



Alternative 3



WEST SITE

Parking

BONEYARD

New Building

B
2 STORY

EXISTING
WAREHOUSE

New Building

C
EQUIP.

MAIN SITE

A
2 STORY

New Building

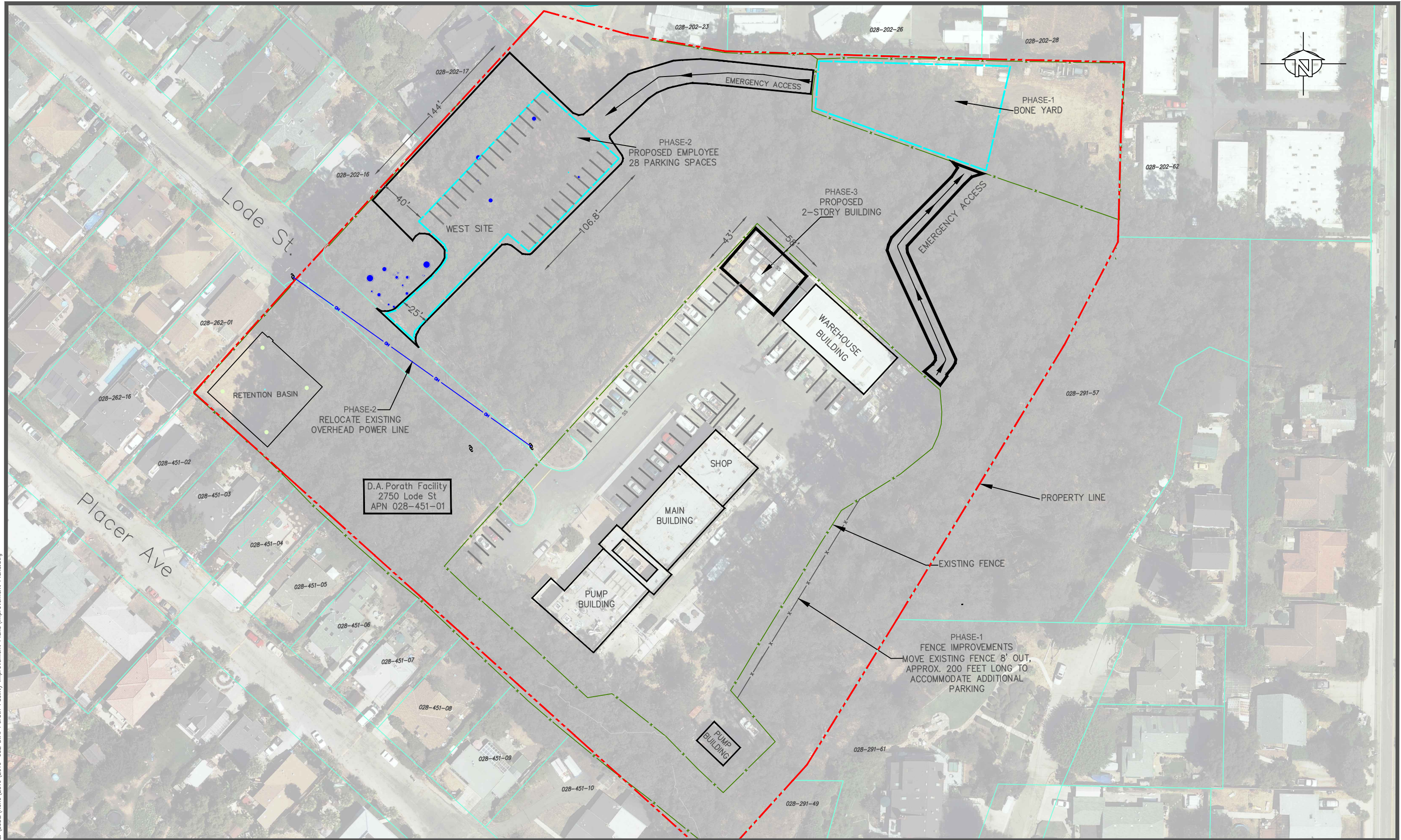
FILL

WASTE

EXISTING
PUMP
BUILDING

Alternative 4

Preferred Alternative



L:\LODE\2019\2019-032 D.A. Porath Facility Improvement Plans\Improvement Plans.dwg, 8/22/2019 7:40:30 AM
L:\LODE\2019\2019-032 D.A. Porath Facility Improvement Plans\Improvement Plans.dwg